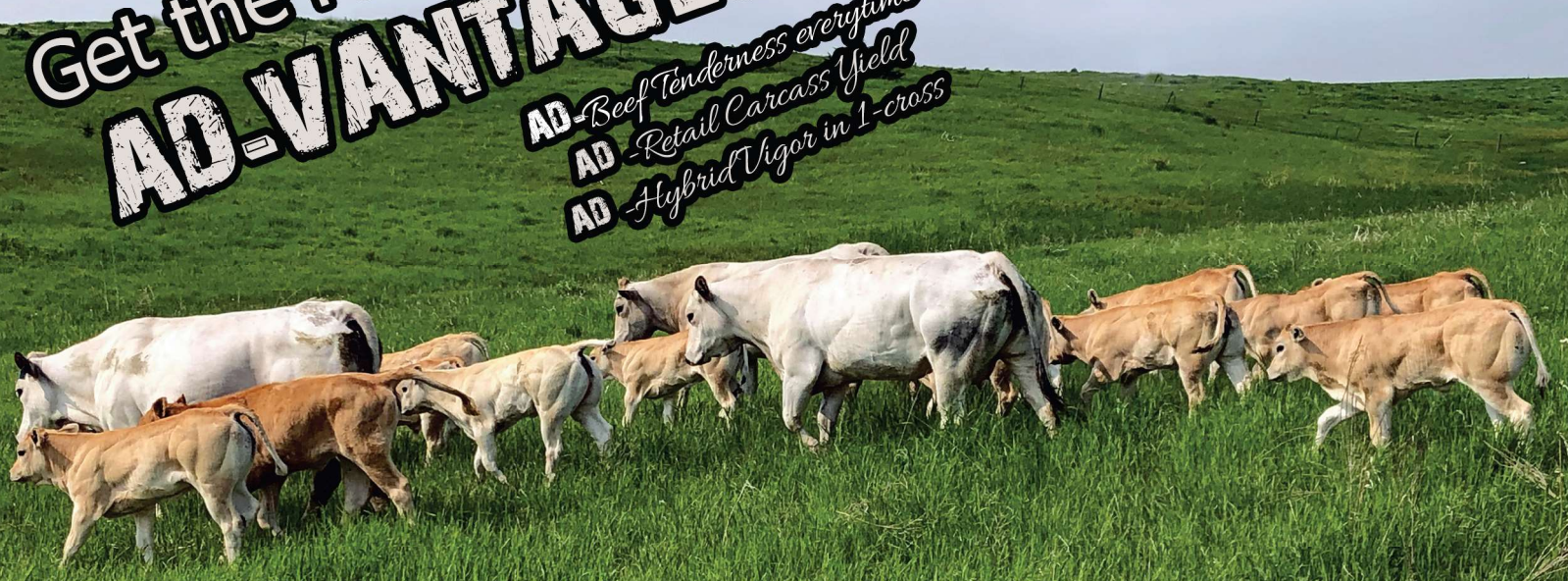


Get the Piedmontese AD-VANTAGES

- AD-Beef Tenderness everytime
- AD-Retail Carcass Yield
- AD-Hybrid Vigor in 1-cross



The cattleman's **ONLY** free lunch:
Hybrid Vigor (heterosis)
Heterosis is simply the outcome of mating cattle of different breeds. The more diverse the cattle, the more heterosis realized. This phenomenon provides that a hybrid offspring has improved traits, that exceed the average performance of their parents.

PIEDMONTENSE TERMINAL CROSSBREEDING
GET THE 1 BREED WITH THE ONLY GENE
CAPABLE OF REDEFINING YOUR PROGRAM
IN 1 CROSSBREEDING SEASON.
Options exist for homozygous Polled & homozygous Black 2-copy Piedmontese breeding stock, as well.



TERMINAL CROSS
\$\$\$
IN THE GENES



373 head of 1-copy Pied-cross from single herd: Av. age 16 months Av live 1316 lbs Av dress 64.77% Av HCW 852 lbs	Yield Grade		Quality Grade	
	# animals	% of total		# animals
YG 1	114	30	Prime	1
YG 2	189	51	Choice	259
YG 3	66	18	Select	109
YG 4 & 5	4	1	Other	4

August 2022 single producer slaughter of grain-finished 1-copy Piedmontese crosses = profit.
81% (303 animals) fall into the premium-generating YG 1&2 categories, plus 69.7% (260 animals) fall into the premium-generating Prime & Choice QG categories.

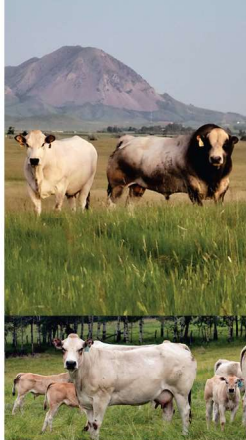
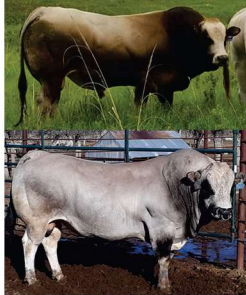
NAPA is the first breed Association to make a gene a mandatory registry requirement. (the inactive myostatin variant C313Y) because of its profound effect on beef yield & improved tenderness. Registry divisions are: Fullblood (Closed Herdbook) and Naturalean (Open Herdbook) with DNA verified homozygous for C313Y. North American Piedmontese Association (NAPA) piedmontese.org

Fullblood Piedmontese - rare & redefining beef quality



The Beef Grading system uses a Yield and 'Quality' grade platform to pay premiums for carcasses that hit certain levels. For 30 years, the Nat'l Beef Quality Audit reviews how it's working. 'Quality' grade is decided by marbling (fat). Each audit tells us that 'quality' is improving (more fat) and yet each audit calls for improvements to beef 'eating satisfaction' (tenderness) and consistency.

Can you profit from increasing your Retail Product Yield while simultaneously improving tenderness & consistency of your beef product? With Piedmontese, you can.



The Piedmontese Breed is the "Myostatin Breed".

Fullblood Characteristics: A moderately sized beef breed, naturally evolved over centuries in the alpine environment of northwest Italy, the Piedmontese are born fawn in color and gradually change to grey / white with full black skin pigmentation. Genetically horned, with exceptional adaptability to varied elevations and climates from extreme heat to harsh winter cold, this breed thrives from Texas to Canada and remains consistent in production of tender low-fat high yielding carcasses - due to the unique natural gene variant they carry, Myostatin C313Y.

All NAPA registered Fullbloods are homozygous (2-copy) for this gene, inactive myostatin C313Y, meaning they will pass forward 1 copy of this powerful beef gene to every calf, everytime.

All the animals on this page are Fullblood Piedmontese, showing the range in color of the mature animals, but they all start fawn-colored. Newborn Piedmontese express very little muscle mass & are born long and slim. At 2 weeks of age you will begin to see the muscle 'pop' and by a month of age, the calves are truly impressive. That muscle mass just continues to build.

Summer Slick Coat, black hided, with extra sweat glands, the Piedmontese thrive in the heat - plus their alpine evolution helps to add resistance to elevation/heart diseases. The breed is also very climate adaptable, with multi-generational herds thriving in cold Canadian winters (swath grazing in the snow).

Feed efficiency expressed as residual feed intake (RFI) is the difference between actual and expected feed consumption (a -number is best). Feed to Gain ratio also accounts for weight gained from the amount of feed eaten. If we look at "what" is being gained (beef or fat) then a review of yearling bull performance tests for Piedmontese compared to Angus, with REA (ribeye area) and Rib Fat will tell the story of real efficient beef production.

Pied top 5 F/G	Feed to Gain	205 day wt lbs	365 day wt lbs	365 day REA sq.in	Rib Fat inches	RFI
Pied - 18J	5.12	670	1091	18.77	0.10	-3.28
Pied - 24J	5.28	688	1144	15.21	0.15	-4.65
Pied - 306J	5.35	623	1169	16.57	0.15	-3.28
Pied - 272J	5.39	726	1347	19.12	0.13	-1.37
Pied - 313J	5.48	675	1140	17.9	0.17	-0.51
MBT top 5 Efficiency	MBT Effic.Score					
Midlands Angus 20406197	126	718	1201	12.9	0.35	-3.59
Midlands Angus 20306218	122	709	1330	13.9	0.22	-3.79
Midlands Angus 20407300	120	780	1302	13.5	0.34	-3.44
Midlands Angus 20272352	118	872	1224	13.6	0.31	-2.91
Midlands Angus 20413063	117	682	1168	10.9	0.30	-4.72
MBT & Pied TOP GROWTH Bulls	MBT Effic/Pied F/G					
Pied - 1262J	7.01	877	1392	16.21	0.19	0.78
Midlands Angus 20438117	113	852	1398	13.5	0.35	-0.15

Midlands Bull Test (MBT) Montana is a large & prestigious yearling bull performance test center servicing many different breeds, but dominated by Angus. With a large population & decades of intense selection to growth, this MBT group had some 160 Angus; by comparison the Pied Bull Test group had 118 bulls total with some 15 years of selection work. The top 5 Pied bulls for Feed to Gain are compared to the top MBT Efficiency Bulls. MBT bulls were fed for target gain of 3 lbs/day; Pied bull were fed to target gain 2.75 lbs/day. For interest, the overall TOP Growth bulls from each group are shown at the bottom. NOTE the Ribeye sizes!

simply
NOTHING
compares

Piedmontese



low calorie, low fat, high protein, nutrient dense, digestible,
heart healthy lower in fat than poultry but eats like Prime

& Tender everytime

courtesy of MANZO Piedmontese

based on 3.5 oz servings	Calories	Total Fat	Cholesterol	Protein
Fullblood Piedmontese ManzoBeef ration#1	96	1.61 g	57 mg	19.1 g
Fullblood Piedmontese ManzoBeef ration#2	175	6.51 g	51.1 mg	22.6 g
American Wagyu	283	24.8 g	70 mg	16.1 g
Salmon	188	11.2 g	53 mg	20.4 g
Turkey	211	11.5 g	103 mg	26.9 g
Chicken	201	10.3 g	92 mg	27.1 g

*Manzo Piedmontese nutritional analysis performed April 2023 by Exact Scientific Services

*Salmon, Turkey, Chicken, and American Wagyu nutritional analysis gathered from USDA FoodData Central

Data below from *Certified Piedmontese Beef* includes nutritional & tenderness information from 1-copy Piedmontese grain-fed raised specifically for their branded beef program

Serving size 3.5 ounces	Ribeye		Top Sirloin		Strip Loin	
	Certified Piedmontese	USDA Prime	Certified Piedmontese	USDA Prime	Certified Piedmontese	USDA Prime
Calories (kcal)	238.7	304.9	125	183.1	179.1	271.3
Total Fat (g)	17.43	26.11	3.39	10.3	10.3	21.47
Saturated Fat (g)	8.88	12.8	1.66	5.17	4.48	10.2
Protein (g)	18.9	16.7	22.83	20.8	21.61	18.0
Tenderness (WBSF*kg)	2.50	2.74	2.99	3.06	2.84	3.04

WBSF measures the pounds of force required to cut meat - lower values indicate tenderness; shear force values below 3.2 are considered "very tender". Nutritional data courtesy of Certified Piedmontese, tests from Midwest Labs, Omaha, NE; shear force data from University of Nebraska Lincoln. (circa 2016)

Nutritional comparisons, circa 2017, confirm Pied as low fat, low calorie & high protein compared to WAGYU and US PRIME.

		1-copy Grain-fed Piedmontese-cross	USDA Prime Beef	US Wagyu Beef
Flatiron	Calories	135.97	195.48	303.43
Flatiron	Protein	20.93	18.00	15.80
Flatiron	Sat.FAT g/100g	2.54	7.68	12.20
Brisket	Calories	157.63	193.33	320.01
Brisket	Protein	20.20	18.30	12.40
Brisket	Sat.FAT g/100g	3.75	6.50	13.10
Tenderloin	Calories	158.75	176.88	179.51
Tenderloin	Protein	20.08	19.30	19.50
Tenderloin	Sat.FAT g/100g	5.08	6.71	6.65

It took the poultry industry some 50 years to completely revolutionize their meat-bird production - by selecting to the inactive Myostatin gene. In Bovines, at least 11 different Myostatin variants exist, all behaving slightly differently. There is only 1 breed that carries the most workable variant (C313Y) in a homozygous state - PLUS have been actively selecting to improve & stabilize Myostatin performance: Piedmontese.



Piedmontese X Dairy

The steer above is Piedmontese x Holstein & so are the 1st three animals reported below. The steer below is Piedmontese x Jersey, reported at the bottom. (All are 1-copy for C313y Myostatin)

Dressing%	Quality Grade	Yield Grade
65.7%	Choice	YG 2
62.3%	Choice	YG 3
61.9%	Choice	YG 3
66.06%	Choice	YG 3.3



	BW lbs	BW range lbs	Hot Carcass Wt lbs	Carcass Dressing %	Ribeye Sq inches	Retail Yield lbs	Rib Fat inches	IMF Fat %	WBSF Striploin Tenderness	WBSF Eye of Round Tenderness
120 Pied-cross	78.7	62 - 94.7	859.8	57.1	14.55	579.8	0.397	5.09	4.07 kg	4.47 kg
120 Wagyu-cross	69.8	57 - 89.5	817.9	55.6	13.23	513.6	0.519	8.77	4.06 kg	4.97 kg

Piedmontese and Wagyu crossed on British-breed cows in Australia; research by U of New England, Armidale, NSW backgrounded & finished together. *All the Piedmontese-crosses would have been 1-copy for C313Y Myostatin.



PIEDMONTSE BULLS



WHY? *for the genetics* OF EFFICIENT TENDER BEEF YIELD

If you're terminal crossing with regist. Piedmontese bulls, you know they have already been DNA test confirmed to carry the genes you need.

So, what benefits do you get in each calf, everytime?

- consistent improvement in **TENDERNESS**
- improved carcass cutability / **Retail YIELD**
- resistance to bovine congestive heart failure (BCHF) / elevation or brisket disease
- resistance to pink eye due to black hide
- improved heat tolerance due to coat reflectivity & increased sweat glands

Industry leaders recognize that crossing high yielding Piedmontese with traditionally fatter British breeds can help to achieve the magic profit YIELD and GRADE combination. [Piedmontese-Angus are proven to produce 80+% Yield Grade 1&2 with Quality Grades Prime & Choice]

Plus, many breeders have built generations of performance-improved Piedmontese seedstock selecting for disposition, ease-of-movement & durability & sound feet/leg structure; individual feed efficiency and powerful rate of gain.

EPD Calving ease trends over 20 years confirm steady improvement.

Terminal cross calving ease is rated basically the same as Angus on the same set of cows.

Use NAPA-reg bulls with confidence; they've been DNA-test confirmed to have the genes you need; some Naturalean Piedmontese are homozygous for Polled and/or Black, as well. Something for everyone!

TERMINAL CROSS

\$\$\$

IN THE GENES

Contact a Breeder:

or NAPA at piedmontese.org

NAPA.piedmontese@gmail.com

North American Piedmontese Association (NAPA) ▶ Driving Breed Improvement
Punch Up Beef Yield ▶ Improve Beef Tenderness ▶ Add Profitability ▶ In One Crossbreeding Season